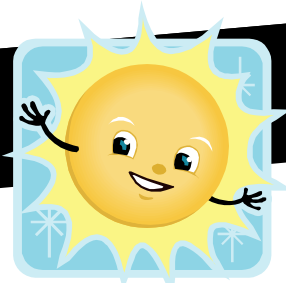


NEWSLETTER



MO-KAN PET PARTNERS

"Yes, you can. If you put your mind to it, you can do it." Joan Kemp

Volume 1, Issue 2

June 2008

PRESIDENT'S MESSAGE

Greetings, Pet Partner Teams,

Summer is just around the corner and I'm so glad warmer weather is finally here. I hope all fared well with the passing storms. The weather for our picnic on May 4th was perfect. Thank you Shirley May for setting up the location. We had a good turnout and perhaps can make this an annual event. The dogs were able to run loose to play. Carol Wells and Jonah were the winners of the "My Dog Can Do That" contest. Check out our picnic picture on page 4 of this newsletter.

June 25th is our Annual Meeting and I would like to see everyone attend. There will have a short business meeting to elect officers and we are privileged to have Dr. Sue Neira speaking on CPR and first aid for dogs. We would love to hear from you if you would like to serve as an

officer. Everyone's opinion is important to us so please join us.

We have had several new teams join Mo-Kan this year and I would like to see us have a mentoring program to help the new teams. If we could assign one person to each team I believe that might help the new team get started in visiting. Many people join with the great intention of visiting but never get started because they just don't know what to do. Perhaps we can alleviate that problem with a mentor.

As we have been told by Delta, they are not longer approving extensions when your term expires. It is up to you to keep track of your expiration date and get evaluated before your certification expires. Mo-Kan does offer evaluations quarterly and we want to make sure everyone is evaluated in a timely manner. Please contact

Joyce Maas to set up a time for your evaluation. We will make every effort we can to provide a date suitable for you.

Mo-Kan membership dues are payable in June. Merrily has sent reminders to our current members. Please complete the form giving us your badge number and expiration date. If you have not already mailed your dues to Merrily you can bring them with you to the annual meeting.

Please check our website frequently. Sue Manning continues to do a great job keeping us up-to-date. Future evaluation dates are posted on the website.

Give your Pet Partner a pat for me and hope to see you at the June 25th meeting.

Patty Levine, President

Inside this issue:

President Message Annual Meeting	1
Volunteer Opportunity Read Accomplishment Evaluation Results	2
KC Expo Next Evaluation Reminders In the News	3
HS donations Facility Agreements	4
In Memoriam	5

"He is your friend, your partner, your defender, your dog. You are his life, his love, his leader. He will be yours, faithful and true, to the last beat of his heart. You owe it to him to be worthy of such devotion." - Unknown



Annual Meeting June 25, 2008

TIME: 7:00 p.m.

PLACE: First National Bank of Kansas
6201 College Blvd, Overland Park, KS

Special Presentation

Sue Neira, DVM on First Aid and CPR for Pets

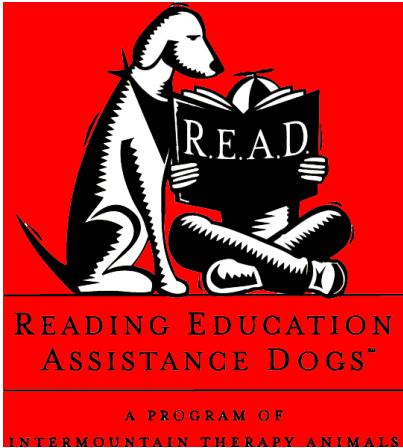
Come learn about how to help your pet in case of an emergency. There will also be a raffle and giveaways.

We will also have the election of officers at this meeting. President, Vice President, Recording Secretary, and Treasurer offices are to be elected.

Please contact the election committee (Carol Wells or Susan Bidwell), if you are interested in holding one of the offices.

Please bring a snack to share at the meeting. There will be beverages provided.

ROOM ENOUGH FOR ONE MORE



Amazing Powers of R.E.A.D.

For the past year, Cheryl Roht and Shirley May May with their pet partners, Robbie and James Brown, have worked with 5 children at Brookridge Elementary School in the Shawnee Mission School District.

The children's reading scores have shown remarkable improvement since the teams have been assisting with them.

Scores were taken from the first of the year and the last of the year.

	<u>First Score</u>	<u>Last Score</u>
Child 1-	24	132
Child 2-	67	105
Child 3-	28	95
Child 4-	43	92
Child 5-	25	59

They worked all school year with everyone, except for Child 4 who they worked with for two weeks.

Shirley May said, "We like to think, and the teachers agree, that our therapy dogs did a great service. They want us back every year!" Shirley May has been going there for eight school years and Cheryl for two.

Congratulations READ teams on a job well done.



Carol Wells and Jonah, Vicky Gray and Joy, Fran Lancaster and Liew and Joyce Maas and Bentley, participated in the St. Patrick's Day Parade throughout Research Hospital halls and waiting rooms. The Parade was complete with bagpipe, staff and patients. There were lots of smiles that day!

Evaluation Results

A successful evaluation was held in April.



Congratulations to all the new teams that passed the evaluation.

- ◆ Joyce Maas and Pembroke Welsh Corgi, Bentley
- ◆ Kim Anderson and Nova Scotia Duck Tolling Retriever, Libby
- ◆ Lynn Hobbs and Miniature Poodle, Jazz
- ◆ Cathy Daniels, Border Terriers, Alyce and Matilda
- ◆ Laura Musil and Golden Retriever Mix, Murphy
- ◆ Bobbi Striegel and Shih Tzu, Keiko
- ◆ Linda Kurz (Hoffman) and Bearded Collie Mix, Max
- ◆ Amy Bennett and Coonhound/lab mix, Ginger
- ◆ Kara Hungerford and Chow/lab mix, Buggs
- ◆ Merrily Shultz, and West Highland Terrier, Fame

Thank you to all the volunteers that helped to make this a successful evaluation.

Evaluator—Gary Turner
Organizer—Joyce Maas

Patty Levine
Sue Manning
Clarence Manning
Amy Bennett
Merrily Shultz
Carol Wells
Suzi Bidwell
Robert Bidwell
Penny Turner



Special Thank You to Merrily Shultz for donating the printer to Mo-Kan Pet Partners so copies of the evaluation documents can be made at the time of the evaluation for our records.

DESPERATELY SEEKING VOLUNTEERS

Shawnee Mission Medical Center expanding to weekend visits

NEW: Every Saturday and Sunday from 1-2pm
Also visits on Tuesdays and Thursdays

Requirements prior to visiting—TB test (covered by hospital) and a Confidentiality agreement

A hospital volunteer will assist you during your visit. They provide clean linens if the dog is placed on the bed, handle the hand sanitizer and get lists of rooms to visit from the nurses.

Visits will start in the Behavioral Health area of the hospital but there is possibility this will expand to other areas of the hospital.

Contact Merrily Shultz or Amy Bennett if interested and to schedule a time to visit.

Volunteers In Action

KC Pet Expo

On April 19-20, 2008, several Pet Partner Teams volunteered to work the KC Pet Expo booth for Mo-Kan Pet Partners. The teams visited with several hundred people over the busy weekend and many people were very interested in our group, our pet partners and the places we visit.

It was a very fun weekend for all.

A HUGE Thank You to Ronda Kern for organizing the teams and creating a beautiful, informative booth.

Thank you to all who worked the booth:

Debbie Baker & Sally
Emma Stone & Gwen
Clayton and Lisa Mark & Ace
Bobbi Striegel & Kieko Muffin
Paula Froog & Hershey
Chris Sigler & Sashi
Laurie Barksdale
Amy Bennett & Ginger



The Bidwells & Clover
Joyce Maas & Bentley
Sonya Stroh & PattiAnne
Rhonda Brown & BJ
The Kerns & Jasmine & Bishop

If you ever come across great press about one of our team members, please send the publication (original preferred) to Amy Bennett so she can put it in the scrapbook and/or Newsletter so we can let the rest of our members know what our wonderful volunteers are doing in our community and beyond on behalf of Mo-Kan and Delta.

FRIENDLY REMINDERS

General Election Meeting—
June 25, 2008—7:00 pm

First National Bank –College Blvd & Lamar –
Overland Park–NO Pet Partners allowed

Presentation by veterinarian , Sue Neira
First Aid and CPR for Pets.



Mo-Kan Pet Partners Annual Dues
are due by the General Election
Meeting June 25.

You should receive a notification in the mail regarding your dues. This year please include your badge number and expiration date for each of your pet partners so we can remind you in advance when your Delta registration expires.

Mo-Kan Pet Partners Meet &
Speak

July 19, 2008 at 6:30 pm
Lutheran Church of the Resurrection
92nd and Mission Road

Presentation by Frankie Ballard
Choosing and Training Your Next
Therapy Dog

Our next Evaluation is Saturday, August 2, 2008 WE NEED VOLUNTEERS!!

Please consider helping out, particularly if you are looking to fill your 4-visit per year requirement. Helping at evaluations or other events are considered as valid visits for this purpose.

Registration forms can be found on our Mo-Kan website or contact Joyce Maas for a form or to volunteer.

In the News



Carol Wells and Joyce Maas have been recognized at the Research Volunteer Publication and at their Luncheon for having logged 100 hours of volunteer service as Pet Partner Teams at Research Hospital.

Carol and Joyce together with their canine companions also hosted a booth at the Research Health Fair on April 19th.

Joyce Maas and Bentley filled in for Sharon Parker who was out of town, at the Global 4-H Conference sponsored by Grove/Groves Community Hospice and Crossroads Hospice in Independence.



Approximately 65 teenage 4-H members from Arkansas, Oklahoma and Missouri together with residents of the Groves Retirement Complex attended. We were asked to speak on how therapy animals can benefit individuals confined in various health facilities and procedures for getting involved in volunteer activities with your therapy animal.

Thank you to all who donated the following items for the Kansas City Humane Society at our May Day Picnic. We had a trunk load full of items that Patty Levine delivered to the shelter.

- Dog treats, toys, food, beds, leashes and collars
- Hand sanitizer, towels and sponges
- Cat litter boxes
- Pet brushes

The shelter was so happy to have this special delivery and the animals will certainly be well taken care of with our support.



May Day Picnic 2008



ARE YOU AN INSURANCE RISK?—Facility agreements and what they mean to you

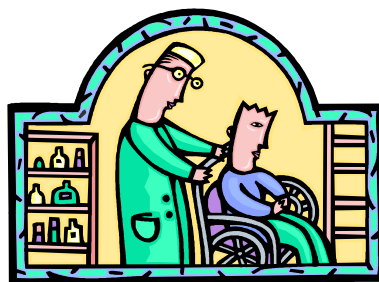
The Delta Society has a wonderful insurance policy that helps to cover you and your pet partner when you are visiting a facility that has signed a Facility agreement with the Mo-Kan Pet Partners and Delta. We contacted Delta representative, Jon Eastlake, regarding why the facility agreement is important to have and what may happen if we do not have an agreement in place.

According to our Delta Pet Partners Training Manual:
Facility agreement: Page 2-16, #5, which states “Handlers must ensure that each facility they visit has policies and procedures in place regarding AAA and AAT. If there are no policies and procedures in place, the handler must provide the facility’s program coordinator with a copy of the Pet Partners Facility Policy Agreement.”

Insurance: Page 4.26, #5, which states “Delta’s CGLI does not provide coverage for losses caused by intentional acts or as a result of Pet Partners and other Delta volunteers acting outside the scope of or not in compliance with, the Pet Partners program and its policies and procedures.” This same item appeared in the

insurance information sent to Pet Partners in March of this year.

Based on the above, a Pet Partners Team would be out of compliance with our policies and procedures (thus possibly nullifying the applicability of our insurance) if they volunteer as a Pet Partners Team at a facility that either does not have their own policies for AAT and AAT or, in the absence of those internal policies, the Pet Partners Team does not furnish them with a copy of the Pet Partners Facility Policy Agreement.



Facility agreements must be updated every 2 years or if there is a major change at the facility.

The facility fills out the facility form and lists the types of programs that are expected with the teams and rates the level of activity that can happen in their facility. Depending on how the facility rated their activity level will determine whether it is ranked as a Complex or

Predictable environment to visit.

You and your pet partner are given a rating during your evaluation. A complex rating means you and your pet partner can visit any facility and that you can handle a complex situation. Your current pet partner team’s rating is shown on your Delta badge.

Sue Manning has done a very diligent job collecting all of our current facility agreements to make sure our organization is up to date with the current agreements. The facilities that are currently covered with Mo-Kan Pet Partners are listed on our website. Please review the facilities ratings before you begin visiting to be sure you and your pet partner will be prepared for the activity level at the facility.

If you are visiting a new facility, please be sure to check with their administration for a copy of their policy and procedures for Pet partner visits or have the facility fill out a Delta Facility form to be returned to Sue Manning so that you and your pet partner can be covered by the Delta insurance.

MO-KAN PET PARTNETS ASSOCIATION

P.O. Box 7496
Overland Park, KS 66207
info@mo-kanpetpartners.com

President:

Patty Levine—816-505-3692
palev5@kc.rr.com

Vice President:

Laurie Barksdale—816-734-4630
yanyo@sbcglobal.net

Vice President— Reading Program

Shirley May May—913-681-6831
Maymayluvsdals@sbcglobal.net

Recording Secretary

Sue Manning—816-763-9710
cmanning1@kcrr.com

Corresponding Secretary

Joyce Maas—816-942-6980
pemcor@kc.rr.com

Treasurer

Merrily Shultz—973-768-1193
merrily@mtswesties.com

Mo-Kan Pet Partners is a non-profit organization and an affiliate of Delta Society, an international organization designed to provide resources for teams working in animal-assisted activities and animal assisted therapy as well as service dog trainers. We are made up exclusively of volunteers and our purpose is to provide safe animal-assisted activity and therapy services to health and educational facilities. Since we are a Delta affiliate, our member teams are trained and evaluated using Delta Society methods and procedures and each team is registered with the Delta Pet Partners program. Our animal/handler teams work in hospitals, schools, nursing homes, libraries and other institutions and are eager to use our pets in such rewarding endeavors.

We're on the web:

www.mo-kanpetpartners.org

Updated with new features and information!!



Mo-Kan Pet Partners is a 501(c)(3) corporation so all donations are tax-deductible.

If you wish to make a donation, please make checks payable to Mo-Kan Pet Partners and mail your donation to:

Merrily Shultz, Treasurer
15689 S. Blackfeather Street

IN MEMORIAM

Our condolences to the Family of John Kemp who passed away on June 10. John was Joan Kemp's husband and assisted Mo-Kan Pet Partners for many years. He will be missed.

Our condolences also go to Helen Jerrard, who recently lost her beloved Sheltie of 13 years.



If you would like to order Pet Partner trading cards can contact Amy Wurst at awurst@henrywurst.com or 816-701-0709

Are you new to Mo-Kan? Have you received your Congratulatory papers from Delta? Are you ready to get plugged in? Then contact Joyce Maas and she'll be more than happy to help you find a facility to visit that will be a good fit for you and your Pet Partner teammate. See above for Joyce's contact information.